

BioChar Planter

PACKAGING

20-Quart

heat-sealed, double
side printed, plastic
bag
(60 Bags per pallet)



Description

BioChar Planter is a synergistic biochar blend that is specially designed to build the vitality of trees and shrubs. It acts as a site of nutrient absorption and exchange, which decreases excess nutrient loss. It is also a catalyst that improves germination, enhances soil fertility while building long-term carbon reserves in the soil. BioChar Planter is made under carefully controlled conditions with peak temperatures of 850° F in a process called slow pyrolysis. This insures that it will retain its characteristics for hundreds of years when added to soil. Due to its complex pore structure, it increases nutrient and water holding capacity of soils while providing “safe harbor” sites for increasing the population of beneficial soil microorganisms. BioChar Planter is inoculated with mycorrhizal fungi, worm castings, organic compost and select mineral powders. All ingredients in BioChar Planter meet NOP Standards for use in organic landscape and farming.

Usage

BioChar Planter is used for landscaping and tree planting. In these applications it is used at 1 part BioChar Planter to 4 parts soil from the planting hole or at ½ inches into 4-6 inches of soil out to the dripline.

Field Trial Results

BioChar Planter was added to maples trees at a rate of 1 part Planter to 4 parts sandy soil from the planting hole. This was compared to trees with no treatment. These trees were left for 2 years without any further additions.



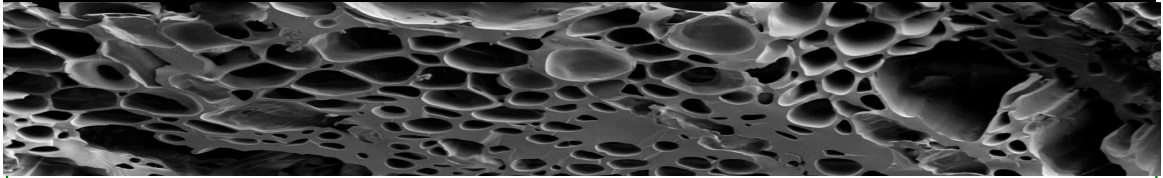
HEIGHT 5' 6"
DIAMETER .75"



HEIGHT 9' 6"
DIAMETER 2"

Application Information

BioChar *Planter* 20 QUART BAG CALCULATOR



NUMBER OF **20 QT BAGS** FOR SPREADING **1/2" DEEP** OVER A GIVEN AREA

		WIDTH							
		2 ft.	3 ft.	4 ft.	5 ft.	6 ft.	8 ft.	10 ft.	12 ft.
L E N G T H	4 ft.	0.4	0.6	0.8	1.0	1.2	1.6	2.0	2.4
	6 ft.	0.6	0.9	1.2	1.5	1.8	2.4	3.0	3.6
	8 ft.	0.8	1.2	1.6	2.0	2.4	3.2	4.0	4.8
	10 ft.	1.0	1.5	2.0	2.5	3.0	4.0	5.0	6.0
	12 ft.	1.2	1.8	2.4	3.0	3.6	4.8	6.0	7.2
	15 ft.	1.5	2.3	3.0	3.8	4.5	6.0	7.5	9.0
	20 ft.	2.0	3.0	4.0	5.0	6.0	8.0	10.0	12.0
	30 ft.	3.0	4.5	6.0	7.5	9.0	12.0	15.0	18.0
	40 ft.	4.0	6.0	8.0	10.0	12.0	16.0	20.0	24.0

For New Plantings

Mix 1 part **BioChar Planter** to 4 parts soil from the planting hole. Place 6 " of this mixture into the hole. Place tree or shrub into planting hole and fill with the remainder of the mix.

For Existing Plantings

Work ½ inch **BioChar Planter** into 4-6 inches of soil (out to the dripline) prior to adding mulch or other amendments.