

BioChar Source

PACKAGING

20-Quart

heat sealed,
double side
printed, plastic
bag (60 bags per
pallet)

40-Quart

polywoven bag
with tag (30 bags
per pallet)



Description

BioChar Source is a synergistic biochar blend that is specially designed to build the vitality of soils and plants. It acts as a site of nutrient absorption and exchange, which decreases excess nutrient loss. It is also a catalyst that improves germination, enhances soil fertility while building long-term carbon reserves in the soil.

The biochar in this product is made under carefully controlled conditions with peak temperatures of 850° F in a process called slow pyrolysis. This insures that it will retain its characteristics for hundreds of years when added to soil. Due to its complex pore structure, it increases nutrient and water holding capacity of soils while providing “safe harbor” sites for increasing the population of beneficial soil microorganisms.

BioChar Source is inoculated with mycorrhizal fungi, worm castings, organic compost and select mineral powders. All ingredients in BioChar Source meet NOP Standards for use in organic landscape and farming practices.

Usage

Turf Establishment

Apply ½” of *BioChar Source* to bare soil prior to seeding or laying down sod. Work into top 4-6 inches of existing soil. Add seed, rake and water thoroughly. For Turf Maintenance top dress lawn with 1/8 inch *BioChar Source*. Rake and water in. For building capacity of existing lawns, apply 1/8 inch *BioChar Source* following plug aeration, slicing or dethatching operations.

Vegetable Gardens & Flower Beds

Mix 2 cups *BioChar Source* per sq. ft. of planting row or bed. Work into top 4-6 inches of existing soil and water in.

Potted Plants

Mix *BioChar Source* in at 10 - 20 % of your potting soil

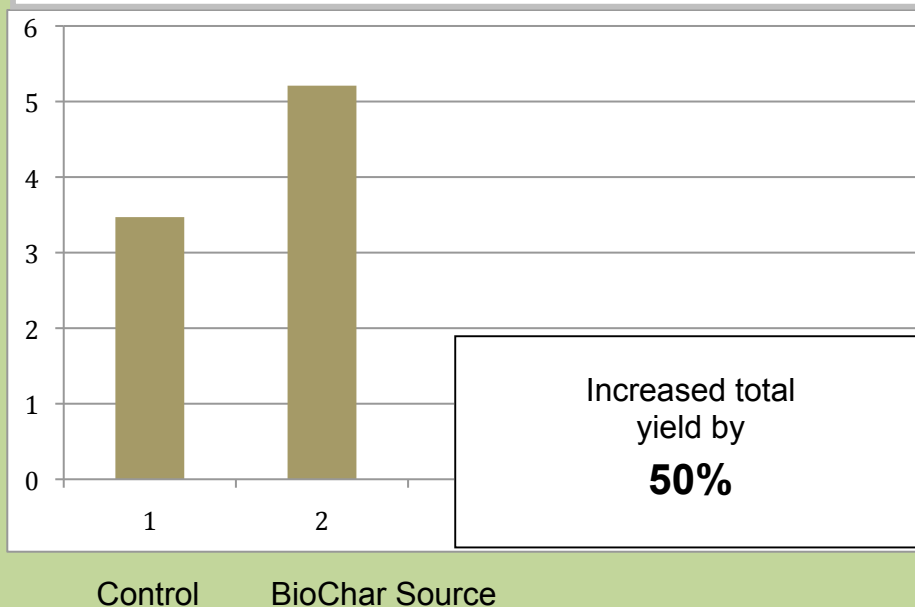
Vegetable & Flower Transplants

Add a 1-inch layer of *BioChar Source* to the bottom of the transplant hole, mix with existing soil and water in.

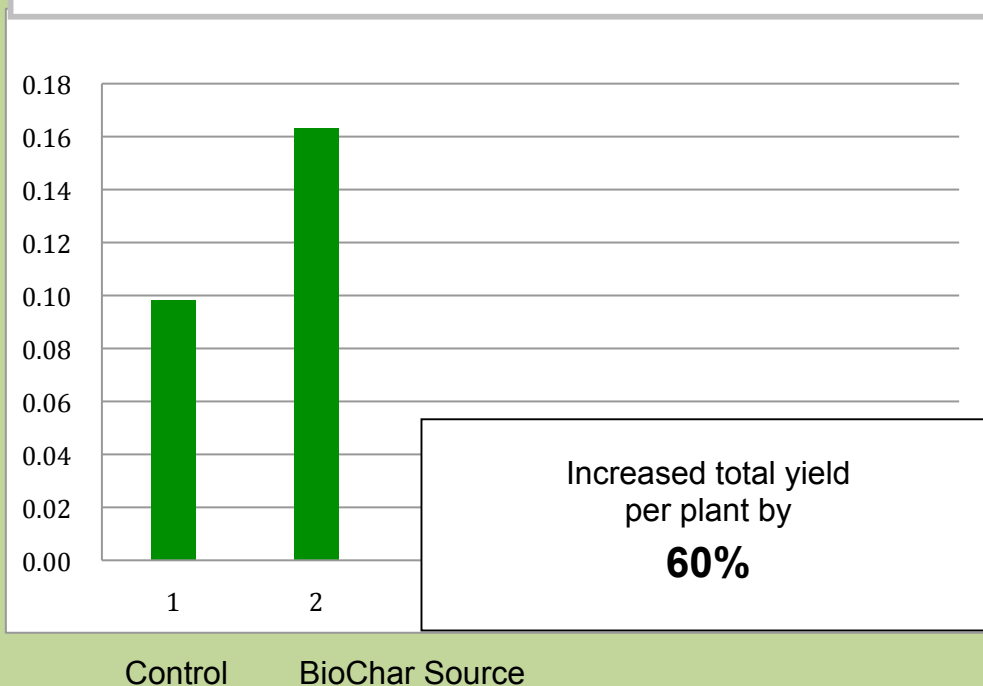
Field Trial Results

Biochar Source was applied to the field (sandy loam soil) at a rate of 1, 20-QT bag per 45 linear ft of row, placed in the furrow prior to seeding.

Total Yield of Potatoes (weight)



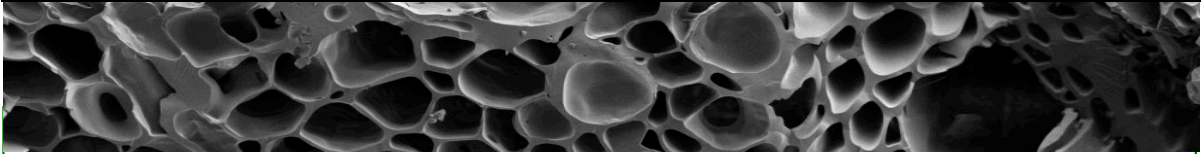
Total Yield of Green Beans (weight per plant)



Application Information

BioChar Source

20 QUART BAG CALCULATOR



NUMBER OF **20 QT BAGS** FOR SPREADING **3/8" TO 1/2" DEEP** OVER THE ENTIRE BED

BED WIDTH

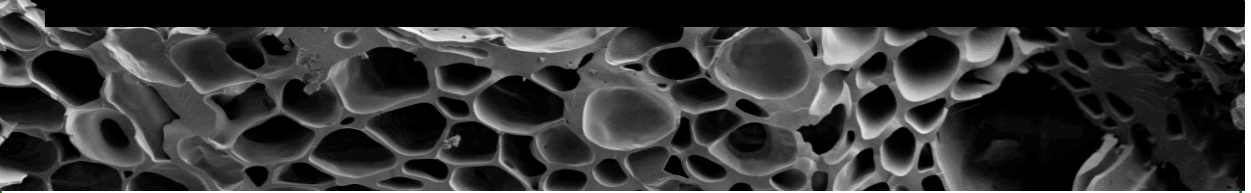
FOR BEDS		2 ft.	3 ft.	4 ft.	5 ft.	6 ft.	8 ft.	10 ft.	12 ft.
B E D L E N G T H	4 ft.	0.4	0.6	0.8	1.0	1.2	1.6	2.0	2.4
	6 ft.	0.6	0.9	1.2	1.5	1.8	2.4	3.0	3.6
	8 ft.	0.8	1.2	1.6	2.0	2.4	3.2	4.0	4.8
	10 ft.	1.0	1.5	2.0	2.5	3.0	4.0	5.0	6.0
	12 ft.	1.2	1.8	2.4	3.0	3.6	4.8	6.0	7.2
	15 ft.	1.5	2.3	3.0	3.8	4.5	6.0	7.5	9.0
	20 ft.	2.0	3.0	4.0	5.0	6.0	8.0	10.0	12.0
	30 ft.	3.0	4.5	6.0	7.5	9.0	12.0	15.0	18.0
	40 ft.	4.0	6.0	8.0	10.0	12.0	16.0	20.0	24.0
	50 ft.	5.0	7.5	10.0	12.5	15.0	20.0	25.0	30.0
100 ft.	10.0	15.0	20.0	25.0	30.0	40.0	50.0	Full Pallet	

---- NUMBER OF 20 QT. BAGS FOR **2.5" WIDE BY 1/2" DEEP** ROWS -----

FOR ROWS	ROW LENGTH (FT)	NUMBER of BAGS
	4	0.3
6	0.4	
8	0.5	
10	0.8	
12	0.7	
15	1.0	
20	1.5	
30	2.0	

BioChar Source

40 QUART BAG CALCULATOR



NUMBER OF **40 QT BAGS** FOR SPREADING 3/8" TO 1/2" DEEP OVER THE ENTIRE BED

FOR BEDS		BED WIDTH							
		2 ft.	3 ft.	4 ft.	5 ft.	6 ft.	8 ft.	10 ft.	12 ft.
B E D L E N G T H	6 ft.	.5		1		1.5	2	2.75	3.25
	8 ft.	.7	1	1.5		2	3	3.5	4.25
	10 ft.	1		1.75		2.75	3.5	4.5	5.25
	12 ft.	1.1		2.0		3.25	4.25	5.25	6.5
	15 ft.	1.25	2	2.75		4	5.25	6.75	8
	20 ft.	1.8		3.5		5.25	7	9	10.75
	30 ft.	2.7	4	5.25		8	10.75	13.25	16.0
	40 ft.	3.6		7		10.75	14.25	17.75	21.25
	50 ft.	4.4		9		13.25	17.75	22.25	26.75
	100 ft.	8.9		17.75		26.75	31.0	35.5	

----- NUMBER OF **40 QT.** BAGS FOR 2.5" WIDE BY 1/2" DEEP ROWS -----

FOR ROWS	<u>ROW LENGTH (FT)</u>	<u>NUMBER of BAGS</u>
	10	.25
	30	.75
	40	1
	90	2.25
	100	2.5